

CELEBRATING

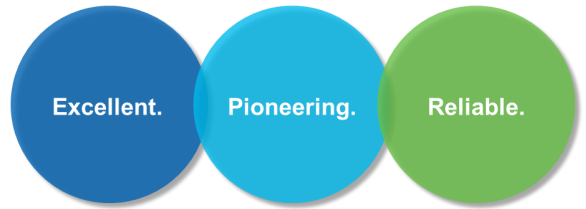
100

YEARS | SINCE 1920

OF INNOVATION IN
PLASTICS

Röchling

Röchling's fundamental values:



In all applications for performance plastics

The Industries We Service With
Röchling Performance Plastics:



Food Processing



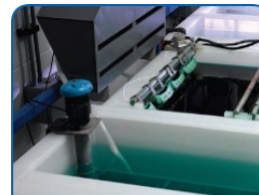
Conveyor & Packaging



Oil & Gas



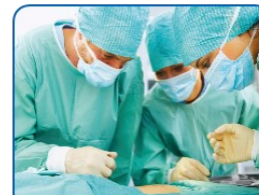
Marine & Defense



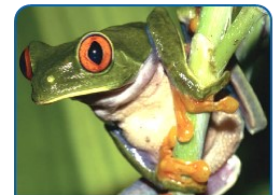
Chemical & Tank



Bulk Material Handling



Life Science



Printables



Aerospace



Transportation

Who is Röchling?

Röchling is a family owned company that is devoted exclusively to growing in the Performance Plastics Industry. In the early 2000's Röchling sold off all their nonplastics companies to focus on strictly the plastics industry.

Röchling sees the Performance Plastics as the future. Our materials continue to provide so many advantages to the industries we serve. Röchling's focus is in the Medical, Automotive and Industrial markets.

They continue to expand through growth and acquisition. The Röchling Group is one of, if not the largest performance plastics converters of plastic resins to stock shapes and parts in the world, devoted to exclusively performance plastic materials.

We would like to work with you to continue to grow the need for performance plastics. It is working with our distributor and industry partners that gives us to inspiration and direction on how to improve our performance plastics offering and capabilities to best server our customers and the industries they serve.



Based on 2018 annual reports



Röchling uses all major manufacturing processes for producing their Performance Plastic Materials. Röchling has the most modern processing equipment worldwide. It is time to join the world leader as your supplier.

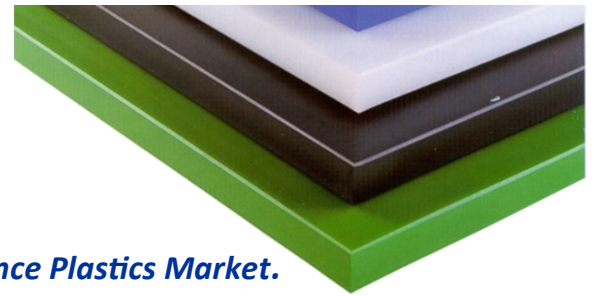
Proudly represented by George Southard / G S Sales

CELEBRATING
100
 YEARS | SINCE 1920
 OF INNOVATION IN
 PLASTICS

Röchling

"Proficiency in Plastics"

Your Proud Partner Servicing the Performance Plastics Market.



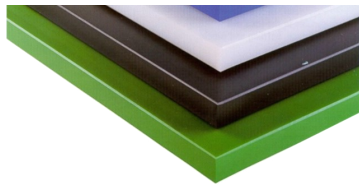
Röchling wants to help grow your business . Please consider Röchling as you partners in market growth. Use Röchling's Salespeople, Product Managers and market Development Team to help your sales growth.

On price sensitive opportunities contact your Outside Salesperson first or our Business Market Manager, if they are not available contact any of the Röchling team. Our goal is to be available to help you grow you business and maintain and grow our current business.,



I need to call Röchling's Market Specialist to help with this industry. If they are not available I know their sales team could help. I am sure they will help develop & win this customer

Röchling Sales & Marketing team will Work with you to determine the best material for your application.



Polyolefin Products:

- **Polypropylene**
- Homopolymer
- CoPolymer
- Heat Stabilized
- Eurogray
- Foamlite®
- **High Density**
- Smooth sheet
- Cutting Board
- Utility Grade
- Pipe Grade
- **UHMW**
- Virgin
- Colors (low minimums)
- Recycled
- Matrox
- Metal & X-ray detectable
- High Temperature
- LubX® C
- LubX® CV

Detectable Products:

- X-Ray Detectable
- Metal Detectable

Mechanical & High Performance Plastics:

- **Acetal**
 - CoPolymer
 - Homopolymer (Delrin®)
 - Metal & X-ray detectable
 - Delrin® AF
 - Delrin® AF DE588
 - **Extruded Nylon**
 - **Cast Nylon**
 - **PEEK (Victrex)**
 - **PEI (Ultem®)**
 - **PPS**
 - **Sustakon® Polyketone**
 - **PET**
 - **PVDF**
 - **PPSU (Radel®)**
 - **PBT**
 - **PVC**
 - **Medical Grade Plastics**
 - Custom Compounds & Colors
- Materials available in sheet, Rod and some in tube & profiles.**
- If you don't see it ask, we may run the product.

Röchling A Century of Competence in Plastics

- 1920** - Acquisition of Holzveredelung GmbH in Berlin with the patent for the densified laminated wood Lignostone®
- 1935** - The company relocates to its current site in Haren, Germany
- 1964** - Development of the thermoplastic Polystone®
- 1975** - Development of the glass fiber reinforced plastic Durostone®
- 1980** - Purchase of the Sustaplast Group
- 1981** - First subsidiary in the US founded
- 1986** - Entry into automotive plastics through acquisition of the Seeber Group in South Tyrol, Italy
- 1987** - First production site in the US established (Röchling Engineered Plastics in NC)
- 1991** - First Asian subsidiary founded in Singapore
- 2002** - First production site in China established
- 2007** - Production in India begins
- 2008** - First medical engineering company acquired
- 2012** - Production site in Brazil established



** Röchling was established in 1822 in the coal business in Germany. (Approaching 200 years in business!)